



***PACIFIC LOGISTICS GROUP***

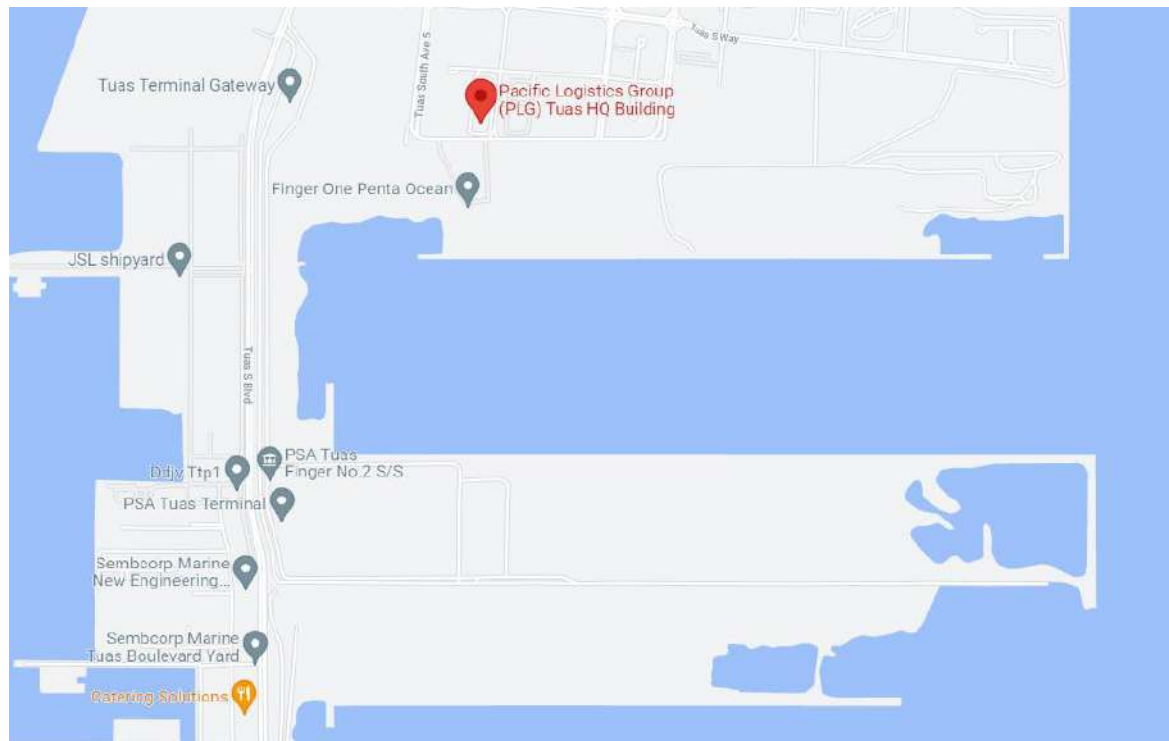
— *PLG Building, Warehouse  
& Facilities*

# *PLG Building (Exterior)*

Location, Entrance and Exterior

# Location Map

**Address:** PLG Building, 31 Tuas South Link 4, Singapore 636834



# Main Entrance



## Specifications:

- Main gate access – 14m wide
- Guard house
- CCTV monitor control room



# PLG Building (Exterior)

Our building is Green Mark certified



# PLG Building (Exterior)



# *Level 6 and 7*

Reception, office area, conference rooms, balcony, pantry & carpark



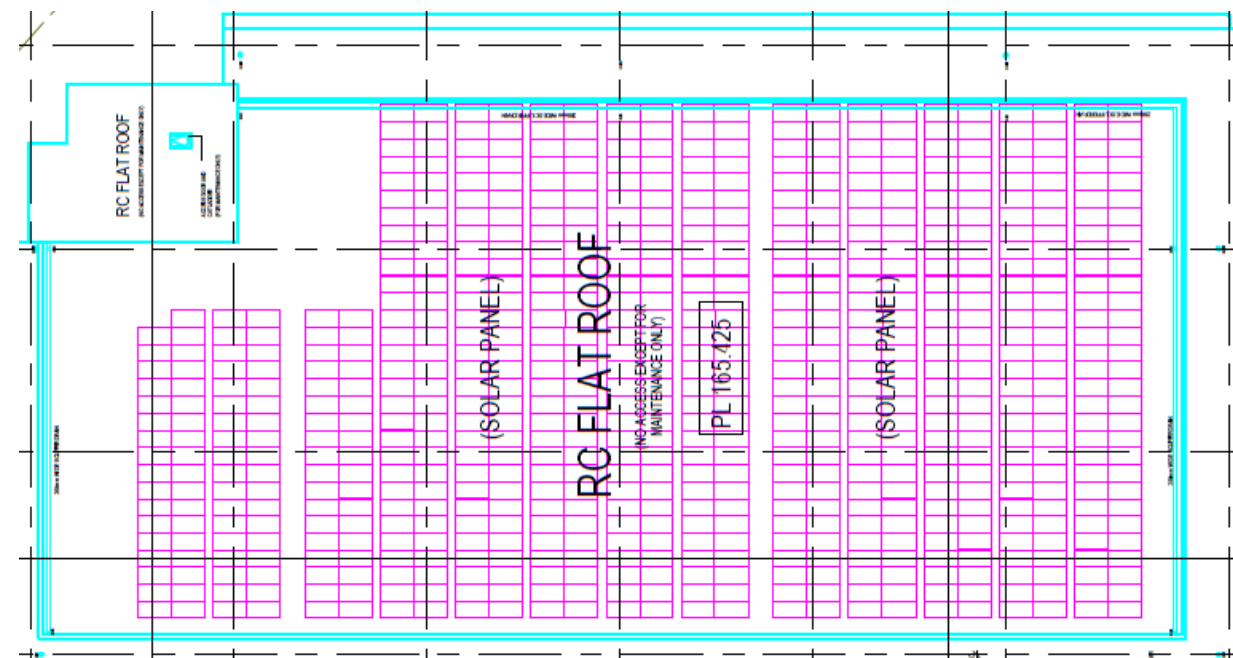
# Level 7 Rooftop

## Solar Panels for Energy Efficiency



Size: 840 pcs of solar panels

- Average monthly savings (based on last 3 months' data) = 25%



### Other energy saving measures:

- Use of LED lights for the warehouse
- Water efficient fittings

# Level 6 and 7 Balcony Area



# Level 6 – Rooftop Garden





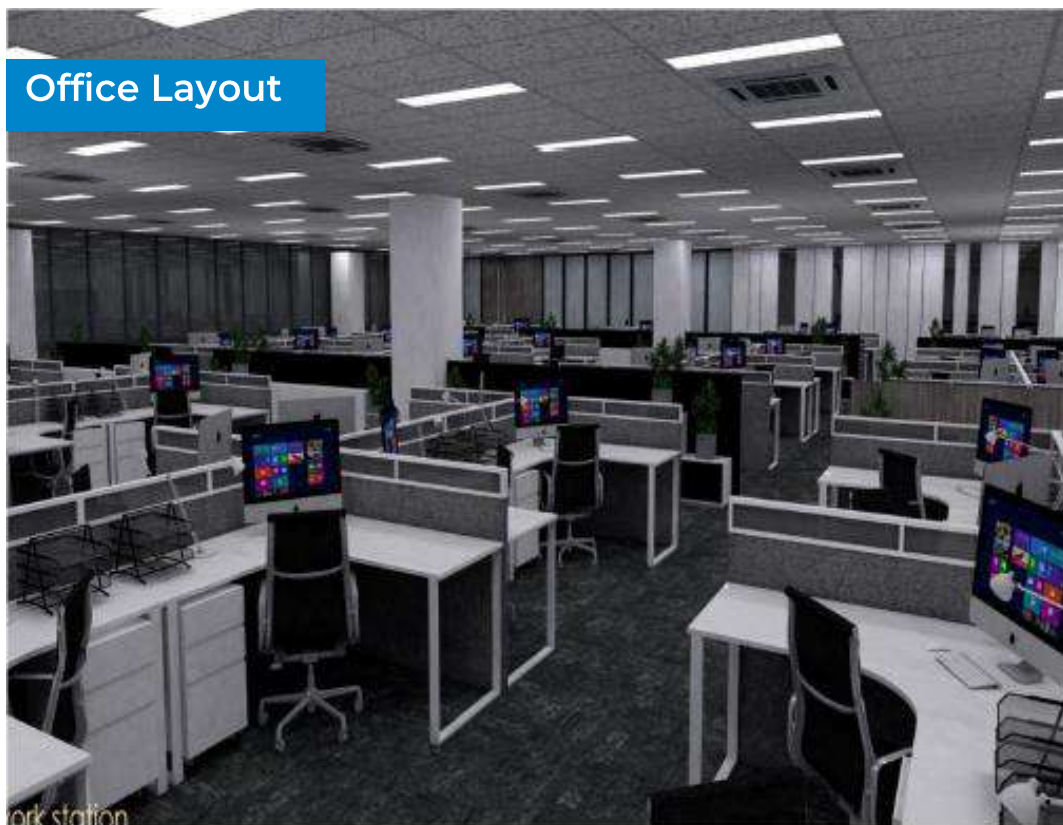
# Level 6 - Lobby Area





# Level 6 - Office Area

Office Layout



Conference Room



## Conference Room Capacity:

- 2 x 10 pax conference room
- 1 x 20 pax conference room
- 1 x 40 pax conference room

## Conference Room Capacity (With Safe Distancing):

- 2 x 5 pax conference room
- 1 x 10 pax conference room
- 1 x 20 pax conference room

# Level 6 – Pantry





# Level 6 – Carpark



## Parking Spaces:

- 50 parking lots
  - 28 in covered space
  - 22 in open space
- 2 handicapped lots
- 25 prime mover lots
- 34 Single/Double/40'CNTR lots

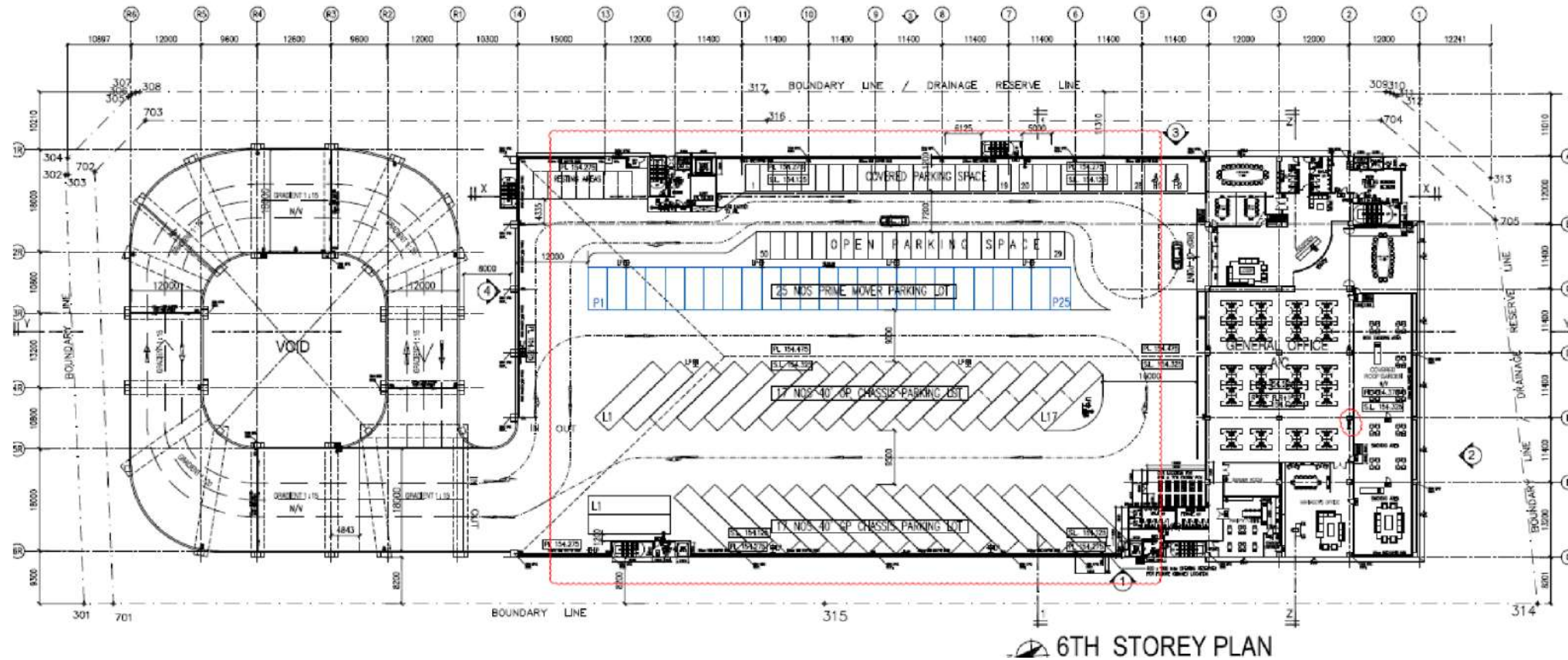


# Level 6 – Carpark





# Level 6 – Carpark



# Level 1 – Carpark



## Parking Spaces:

- 20 parking lots in covered space
- 2 handicapped lots



# *Levels 3 - 4*

Mezzanine office

# Level 3 to 4 – Mezzanine Office



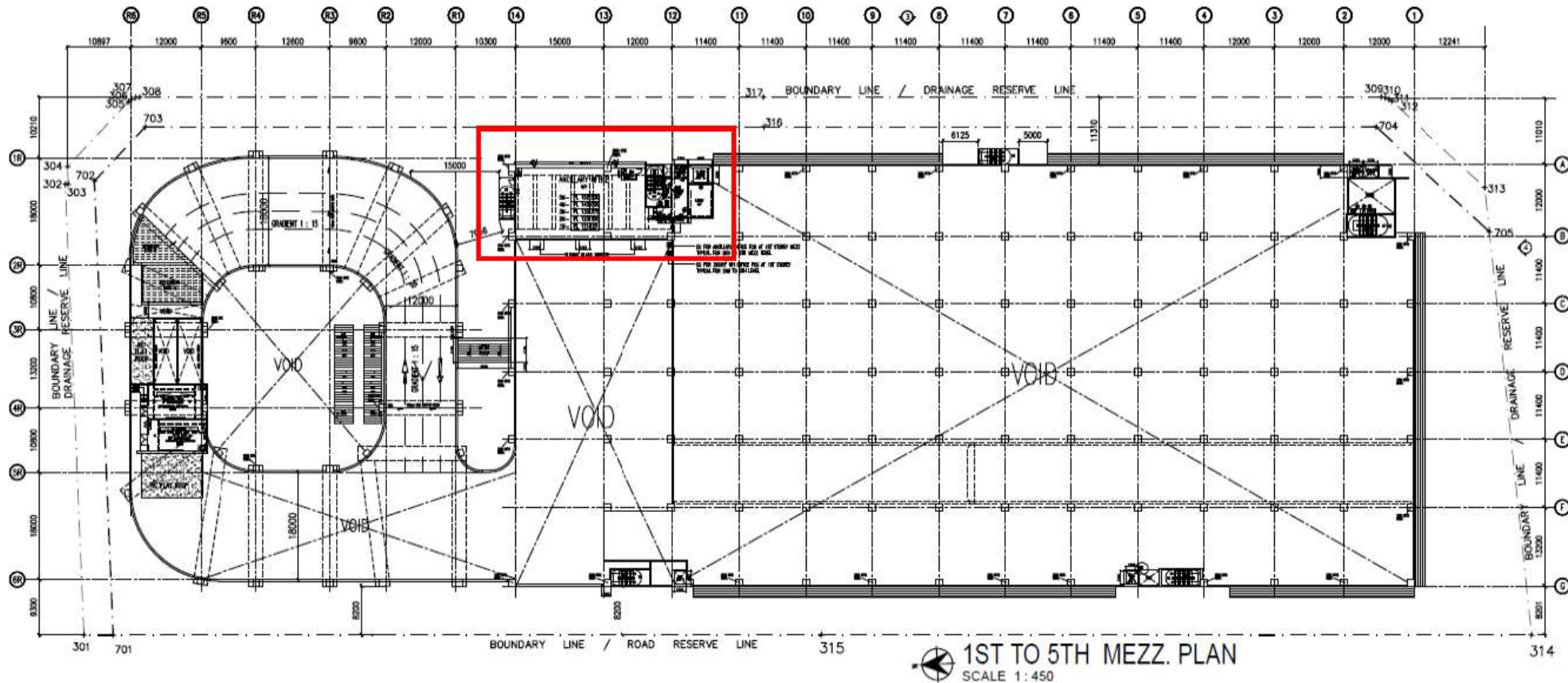
**Size: 3000 sqf**

**Facilities:**

- 1 x handicapped Toilet
- 1 x conference room
- 1 x pantry equip with hot/cold water system
- 1 x general room
- 1 x set of LAN cable



# Level 3 to 4 – Mezzanine Office



# *Warehouse & Facilities*

Storage area and facilities available

# Warehouse Overview

## Specifications

AREA	LOADING BAY	FLOOR LOADING KN/M2	FLOOR TO CEILING HT. (M)	FLOOR AREA SQF
1 <sup>st</sup> storey warehouse	11	50.0	8.3	100,000
2 <sup>nd</sup> storey warehouse	11	50.0	8.6	100,000
3 <sup>rd</sup> storey warehouse	11	20.0	8.6	100,000
4 <sup>th</sup> storey warehouse	11	20.0	8.6	100,000
5 <sup>th</sup> storey warehouse	11	20.0	8.6	100,000
6 <sup>th</sup> storey open carpark	NIL	15.0	0	100,000





# Warehouse Overview

Bare Warehouse View



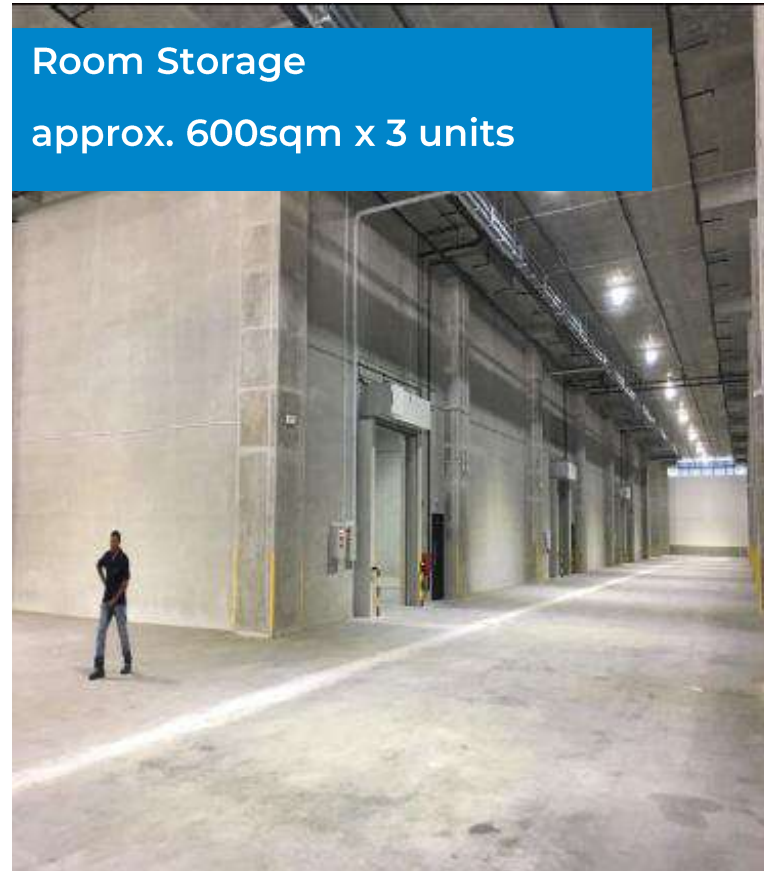
Warehouse Floor Area View



Loading Bay View



# Level 1 - Warehouse

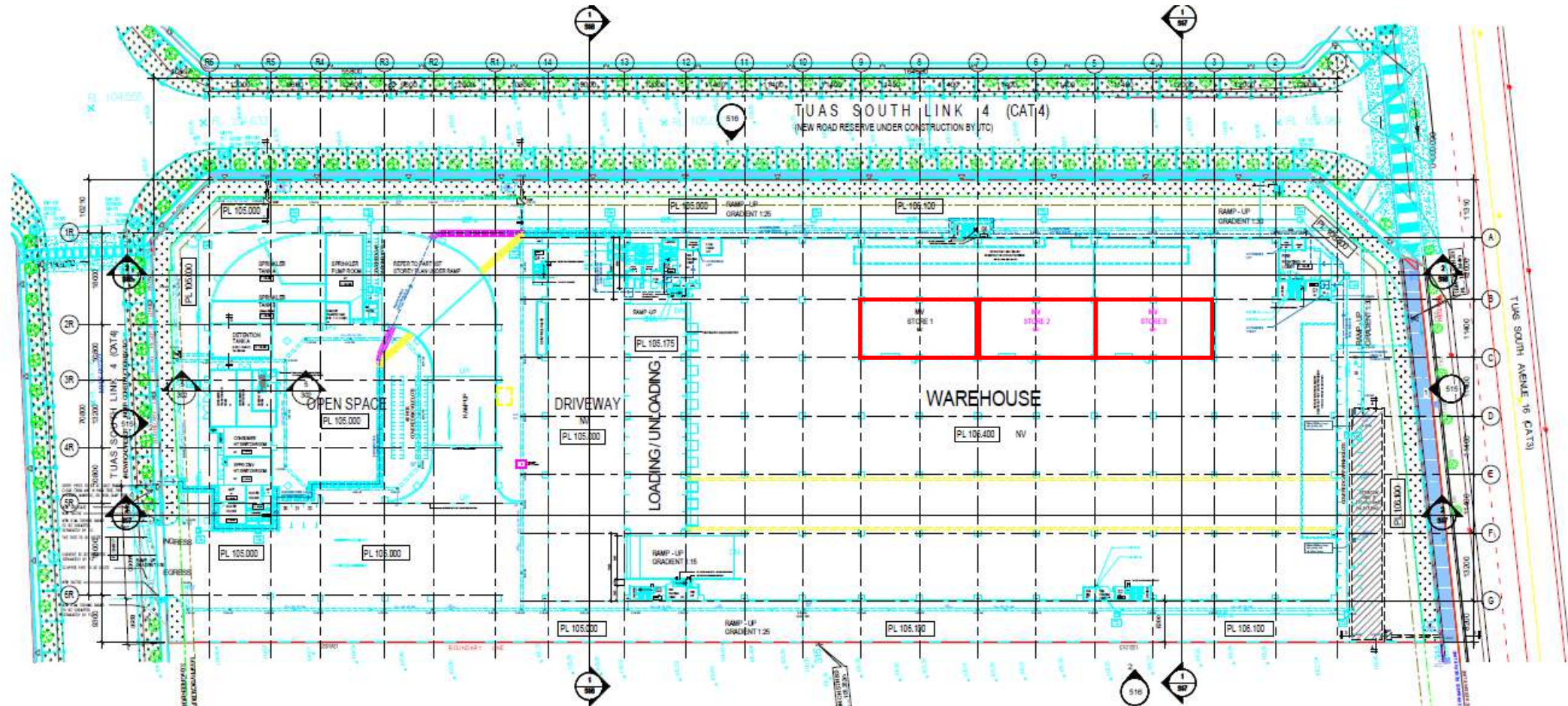


Room Storage

approx. 600sqm x 3 units

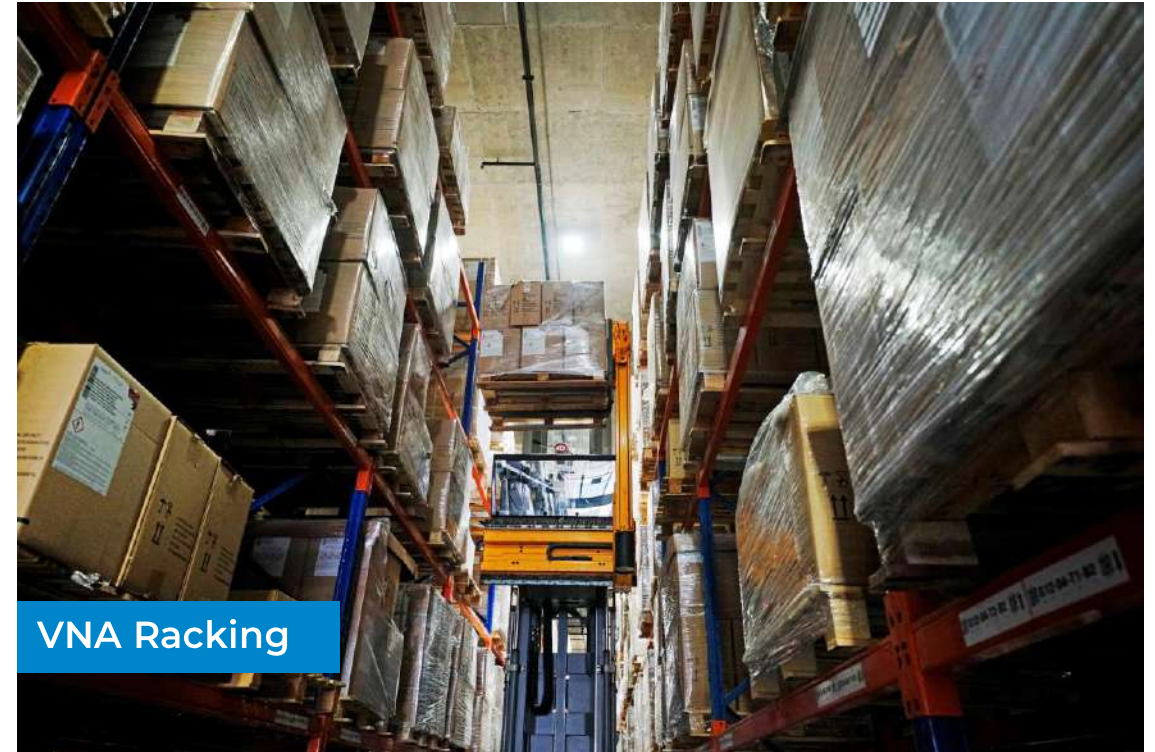


# Level 1 - Warehouse

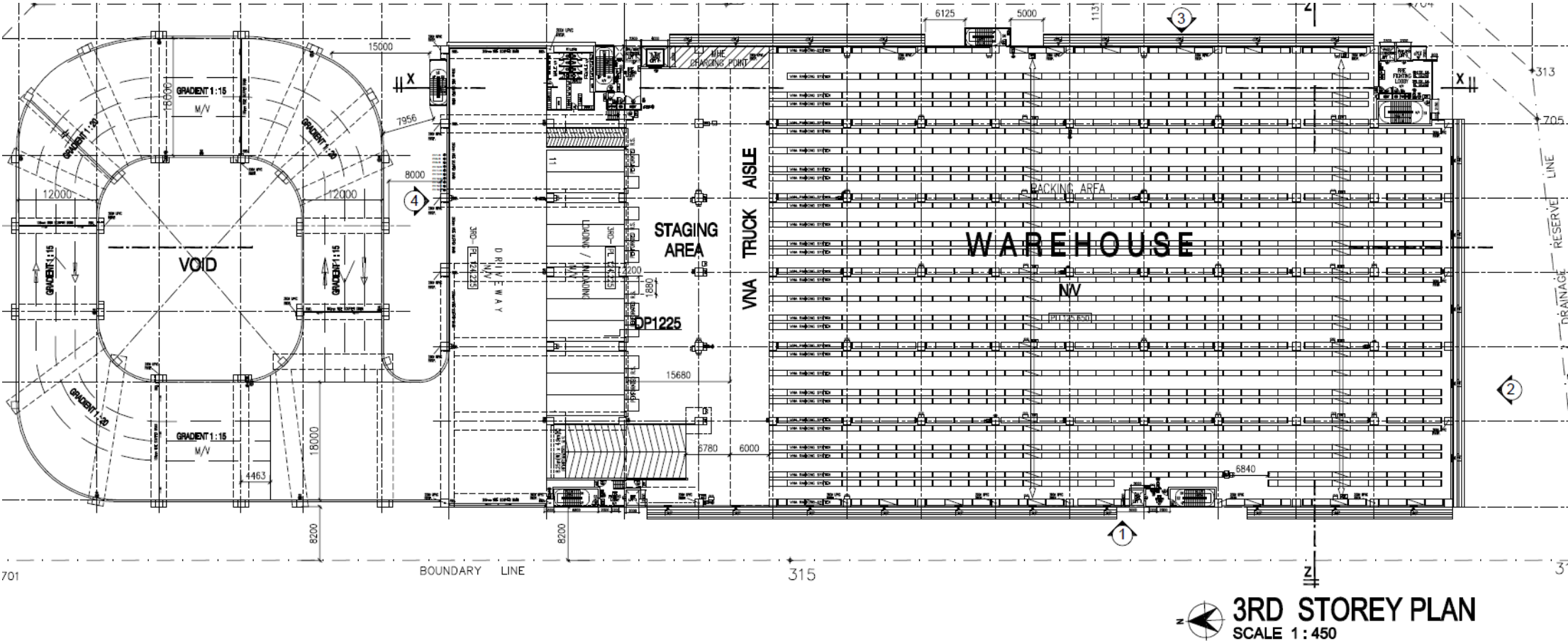




# Level 3 - Warehouse



# Level 3 - Warehouse





# Level 4 - Warehouse



Storage



Heat Treatment Chamber



Sandblasting Chamber



VLM System



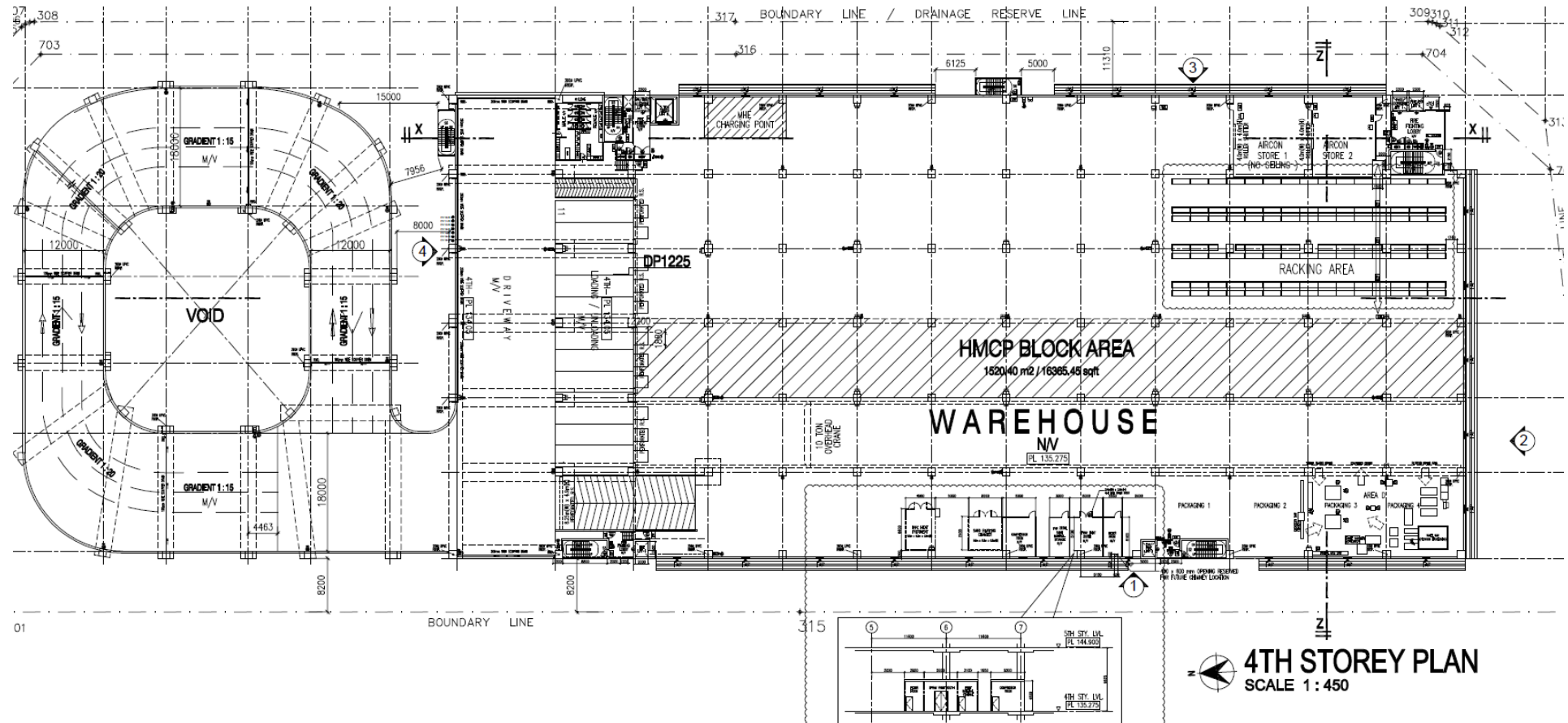
Spray Painting Chamber



Wood Cutting & Packing



# Level 4 - Warehouse



# Thank You!



[plg-logistics.com](https://plg-logistics.com)