



***PACIFIC LOGISTICS GROUP***

**Pacific Integrated Logistics Pte Ltd  
Representative Office**

# — Company Profile: South Korea

# Asian Expertise, Global Connections

We leverage our deep Asian expertise, strong established networks, strategic partnerships and customised technology-based integrated logistics solutions to fulfill demands, even under uncertainty. Our network extends beyond the borders of our own countries and around the globe, with our membership with the IATA, WCA and GLN networks.

Our experience and expertise in the area of logistics, freight forwarding, warehousing, value-added services and e-commerce connects and mobilises the global and regional markets.

Our dedicated people, agile thinking and multimodal solutions empower our customers to achieve operational efficiencies, cut costs, lower risk and focus on their core work.

PLG is bravely seeking new frontiers and changing the way logistics operates in Asia and beyond.



# About Us

Today, PLG is one of the fastest growing Logistics and Freight Forwarding companies in the region, employing a workforce of over 200 people in Singapore alone across its group of companies.

With its global connections and regional networks spanning 16 locations in 10 countries (Singapore, China, Malaysia, Laos, South Korea, Cambodia, Philippines, Thailand, Indonesia and Germany), PLG provides customised and cost-effective integrated logistics solutions to its clients, many of whom are multi-national companies.

In Singapore, PLG owns and manages a 700,000 square feet flagship corporate building and modern warehouse near Singapore's new Mega Seaport at Tuas. Combined with 4 other leased warehouses, PLG manages a massive 1.2 million square feet of warehouse space to service its diversified clientele.



## OUR HUMBLE BEGINNINGS

Founded in 2000 by Mr Kelvin Lim, PLG started modestly as a freight forwarding company with 2 employees in a small office space

# PLG Building (Singapore HQ)

- PLG's HQ building is located right next to the Tuas Mega Port
- 2 levels of office space with 25,000 square feet on each level at the roof top with a 360-degree sea view
- 100,000 square feet roof-top parking space
- 7-storey high with a total of 700,000 square feet floor space
- 500,000 square feet ambient warehouse and 100,000 square feet open yard light cargo storage space

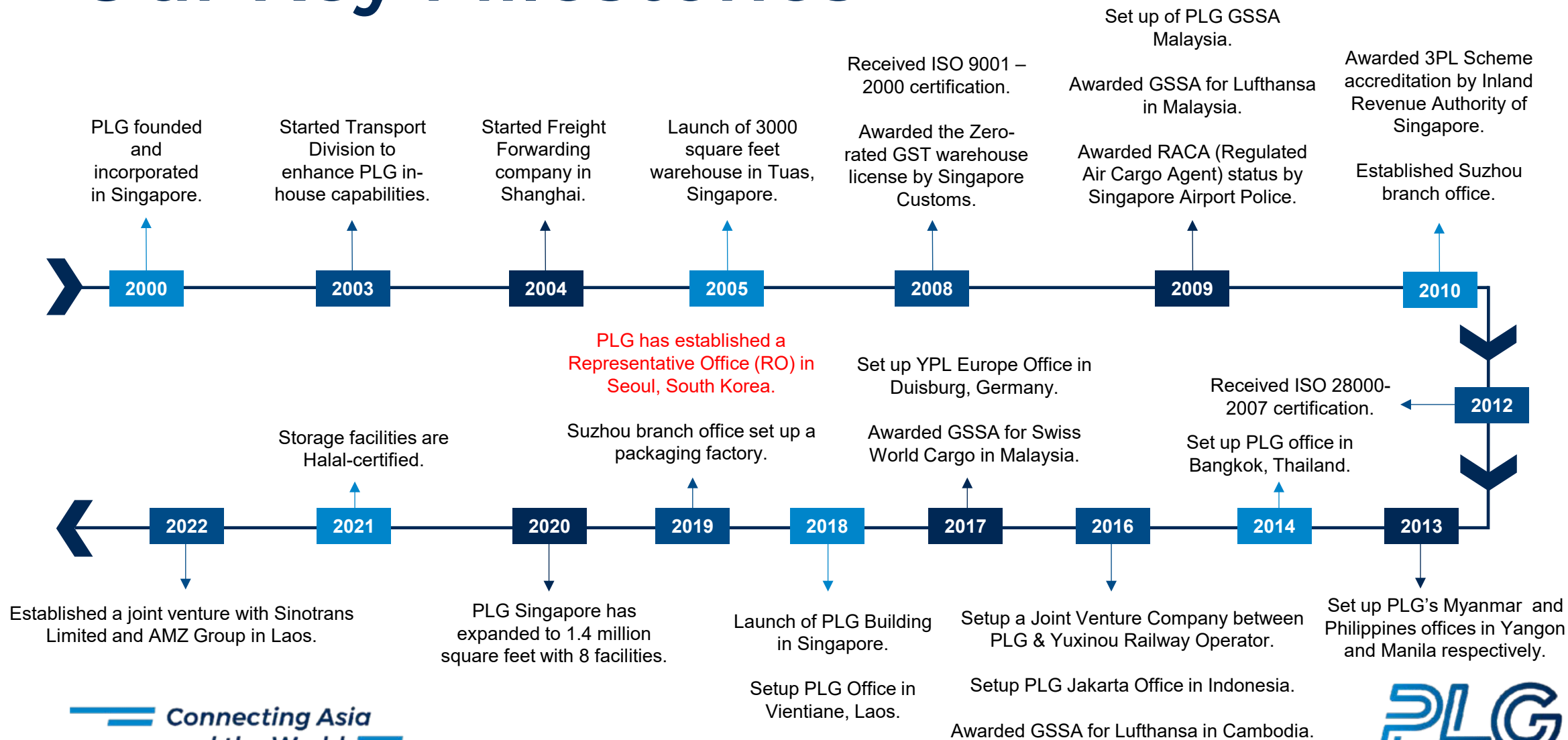


# PLG Building (Singapore HQ)



| AREA                                | LOADING BAY | FLOOR LOADING KN/M2 | FLOOR TO CEILING HT. (M) | FLOOR AREA SQF |
|-------------------------------------|-------------|---------------------|--------------------------|----------------|
| 1 <sup>st</sup> storey warehouse    | 11          | 50.0                | 8.3                      | 100,000        |
| 2 <sup>nd</sup> storey warehouse    | 11          | 50.0                | 8.6                      | 100,000        |
| 3 <sup>rd</sup> storey warehouse    | 11          | 20.0                | 8.6                      | 100,000        |
| 4 <sup>th</sup> storey warehouse    | 11          | 20.0                | 8.6                      | 100,000        |
| 5 <sup>th</sup> storey warehouse    | 11          | 20.0                | 8.6                      | 100,000        |
| 6 <sup>th</sup> storey open carpark | NIL         | 15.0                | 0                        | 100,000        |

# Our Key Milestones



# Our Role & Strengths

Pacific Integrated Logistics Pte Ltd Representative Office (South Korea) was established in 2019 to serve as a Liaison Office for the Pacific Logistics Group whose parent company, Pacific Integrated Logistics Pte Ltd, is headquartered in Singapore.

Our Global network includes PLG offices in Germany, China and various countries in South East Asia and international trade associations such as the WCA and GLN.



# Our Services

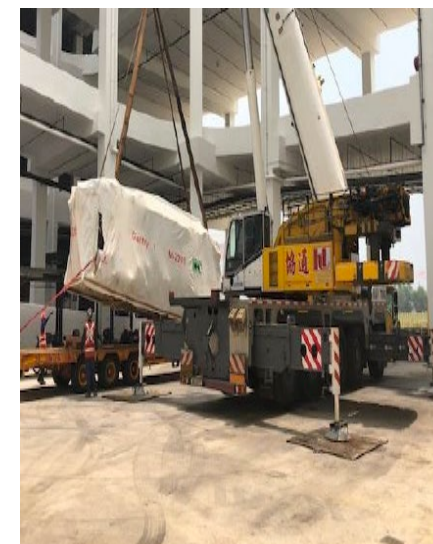
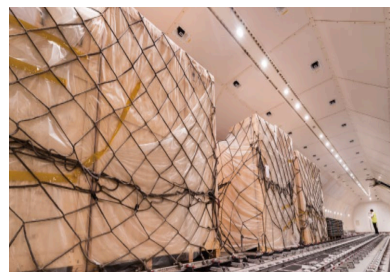
The Pacific Logistics Group offers a diversified scope of services including the following:

- Multi-modal (air, sea, rail and land) freight forwarding services
- Warehousing and inventory management
- Projects including special, out-sized and heavy cargo handling
- Value-added services
- Specialised packing including heat shrink wrapping and chemical foam packing
- Air Cargo Terminal Management



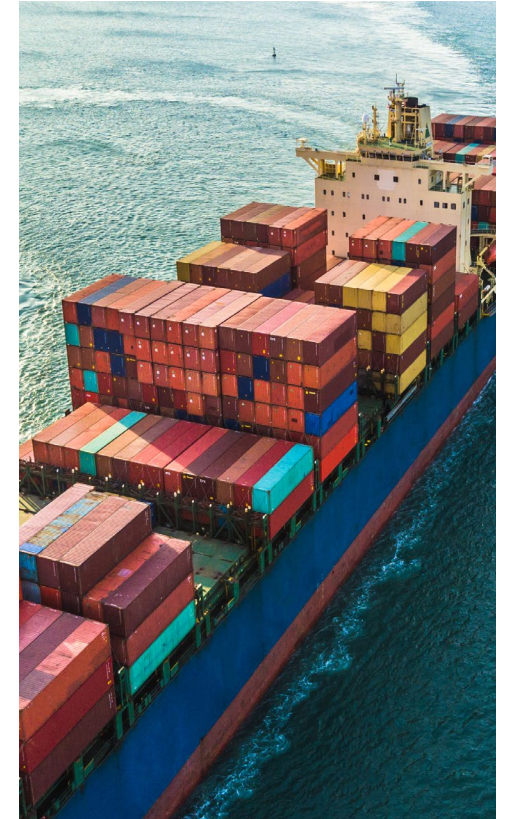
# Air Freight Services

- Import/ Export freight forwarding
- Handling of general & specialised cargo
- Project cargo handling
- Custom clearance
- Custom brokerage
- Packing and palletising
- Trucking
- Warehousing and distribution
- Free consultation on trade and transportation



# Sea Freight Services

- International multi-modal trans-shipment, sea to air, sea to sea, sea to land
- FCL & LCL
- General, Dangerous, Oversized & valuable cargo handling
- Custom clearance
- Custom brokerage
- Packing and palletising & value added services
- Cargo insurance
- Warehousing and distribution
- Free consultation on trade and transportation



# Thank You!

## Follow Us:



## Contact Us:



plg-logistics.com